



Total squares **16.2sq**

 **3**  **2**  **2**



FLOORPLAN OPTIONS

All available ready-to-go floorplan options for this design can be viewed on the following pages, or visit www.burbank.com.au.

Facades available:

Drysdale, Arkley, Dowd, Haring

Nolan, Alpine, Woodland

Overall home width 11.15m

Overall home length 17.63m

Residence 108.0m² 11.6sq

Garage 36.1m² 3.9sq

Porch 6.4m² 0.7sq

Total 150.5m² 16.2sq

Listed details based on Drysdale façade floorplan (illustrated)

*Copyright conditions. All photos and illustrations are representative only. Floor plans and specifications may be varied by Burbank without notice, the dimensions are diagrammatic only and a Building Contract with final drawings will display correct dimensions and detail. All designs are the property of Burbank and must not be used, reproduced, copied or varied, wholly or in part without written permission from an authorised Burbank representative. Copyright Burbank Australia Pty Ltd. ABN 91 007 099 872. Builders Registration Number CDB-U-52603.

Call 13 BURBANK
Visit burbank.com.au



FLOORPLAN OPTIONS



Option K-1

Provide kitchen upgrade option with 1no. open shelf
above refridgerator space

FLOORPLAN OPTIONS

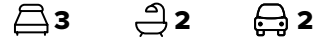
 **3**  **2**  **2**



Option K-2

Provide kitchen upgrade option with 1no. open shelf above refridgerator space, 1no. 600mm pantry cupboard, 3no. 450mm base cabinets, 1no. 900mm under bench oven, 1no. 900mm cook top, 1no. 900mm overhead cupboard with retractable rangehood, 2no. 450mm overhead cupboards, 1no. MW provision with pot draw, 1no. 900mm base cupboard, 1no. dishwasher provision, 1no. 450mm drawers, Additional tiled splashback and adjust benchtop to suit.

FLOORPLAN OPTIONS



Option K-3

Provide kitchen upgrade option by reducing family by 390mm with 1no. open shelf above refrigerator space, 1no. 800mm pantry cupboard, 1no. 700mm base cupboard, 2no. 800mm blind base cupboards, 2no. 300mm base cupboards, 1no. 900mm under bench oven, 1no. 900mm cook top, 1no. 900mm overhead cupboard with retractable rangehood, 1no. 700mm overhead cupboard, 1no. 350mm overhead cupboard, 1no. 600mm x 600mm corner overhead cupboard, 1no. 300mm overhead cupboard, 1no. 900mm overhead cupboard, 1no. 900mm base cupboard, 1no. dishwasher provision, 1no. 450mm drawers. Provide 1no. 514mm x 1810mm no bottom reveal fixed window and move family highlight window over 120mm. Provide additional tiled splashback and benchtop to suit.

FLOORPLAN OPTIONS



Option ENS-1

Provide ensuite option with 1no.
1482mm wide vanity unit with 2no.
basins.

FLOORPLAN OPTIONS



3



2



2



Option IP1-1

Provide mirror option to rear of house. Remove built in linen & relocate bed 2 robe in this position & provide 1no. 720mm flush panel door with 4no. 450mm shelving to WIL.

FLOORPLAN OPTIONS



Option EP1-1

Provide Alfresco Option to rear of meals with structural concrete floor, light point and 1no. 470mm x 470mm brick piers.
Increases area by 19.96m².

FLOORPLAN OPTIONS



Option G-1

Provide extension to Garage to create additional Storage area.
Increases area by 4.53m².
Increases width by 840mm.

FLOORPLAN OPTIONS



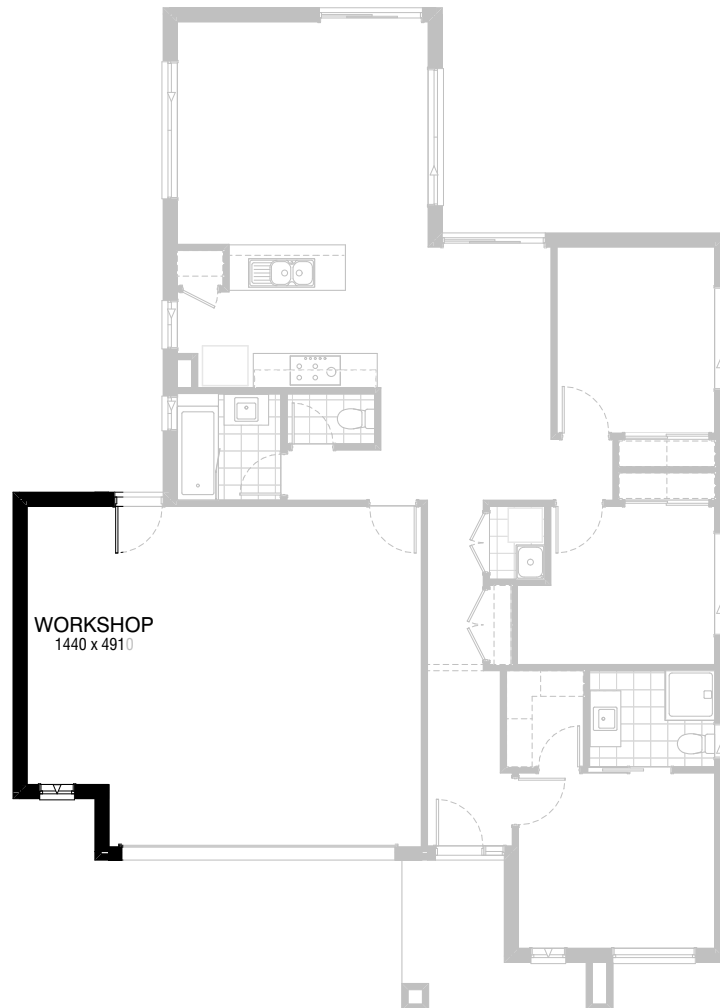
3



2



2



Option G-2

Provide extension to Garage to create
Workshop area including additional
window to suit.
Increases Width by 1440mm.
Increases area by 7.76m².

FLOORPLAN OPTIONS



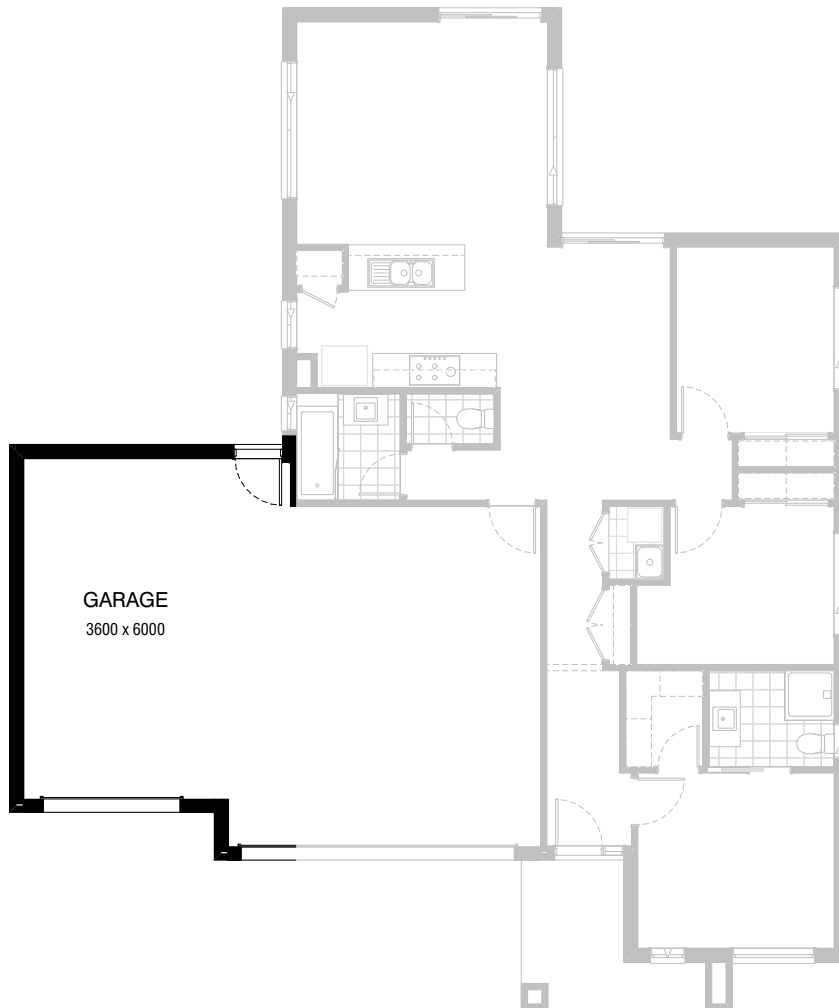
3



2



2



Option G-3

Provide triple car Garage including additional Garage door as per colour selection.

Increases area by 24.30m².
Increases width by 3600mm.